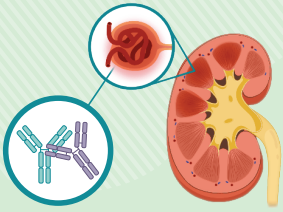


How Does IgA Nephropathy (IgAN) Affect Individuals Based On Differences In Ethnicity, Race & Sex?



What Is IgAN?

IgA nephropathy (IgAN) is a progressive kidney disorder resulting from accumulation of IgA-containing immune complexes in the kidney glomeruli, causing inflammation in the kidney and leading to impaired kidney function, chronic kidney disease, and eventually kidney failure.^{1,2,6,7}

- IgAN diagnosis is made by a renal biopsy¹
- It is the most common cause of primary glomerulonephritis in the world¹

~2.5 Per 100,000 Adults Are Affected By IgAN Worldwide²

How Does IgAN Affect Individuals In Different Geographies?



Characteristics That May Vary By Ethnicity:³

- 1 Presenting signs & symptoms
- 2 Disease progression
- 3 Long term outcomes

Prevalence is slightly lower in North American and European countries compared to East Asia.^{2,3}

The highest prevalence of IgAN is found in East Asia.³
This could be partially attributed to more urine sample screenings and renal biopsies in this area.

United States

Brazil

Morocco

United Kingdom

Czech Republic

France

Italy

Korea

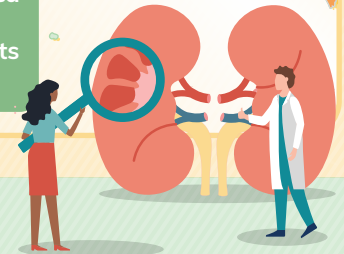
China

Japan

Singapore

Australia

The incidence in Africa tends to be much lower than other parts of the world.³



Biopsy-Proven Primary Glomerulonephritis⁶

Country	Cases Per Million Population (%)
CHINA	54.3
SINGAPORE	43.2
ITALY	35.2
AUSTRALIA	34.1
CZECH REPUBLIC	34.1
UNITED KINGDOM	33.9
JAPAN	31.0
FRANCE	30.2
KOREA	28.3
UNITED STATES	27.3
BRAZIL	20.1
MOROCCO	12.0

How Does IgAN Affect Individuals Differently Based On Sex?

Male To Female Ratio By Geography

The male to female ratio of IgAN in East Asia is about 1:1, where in Europe and the United States it is much more prevalent in males, with ratios as high as 6:1^{2,4}

EUROPE & UNITED STATES

EAST ASIA

Health Outcomes In Males To Females



Males with IgAN may experience more long term adverse health outcomes than females.⁵



Males have lower survival rates compared to females.⁵



Learn More:

Find more resources on rare kidney diseases such as IgAN, Polycystic Kidney Disease (PKD), and others.

References
1. Gutiérrez E, et al. Nephron. 2020;144(11):555-571.
2. Suzuki Y, et al. Kidney360. 2021;2(8):1339-1348.
3. Yeo SC, et al. Nephrology. 2019 Sep;24(9):885-895.
4. Barratt J. IgA Nephropathy & IgA Vasculitis. Kidney Disease Improving Global Outcomes. 2017.

5. Wen D, et al. Int Urol Nephrol. 2021;53(2):315-323.
6. Lai KN, et al. Nature Rev Dis Primers. 2016.16001(2016)
7. Perše M, Večerić-Haler Ž. Int J Mol Sci. 2019;20:6199.

The information provided through NepHU is intended for the educational benefit of health care professionals and others who support care for those with kidney disease and other related conditions. It is not intended as, nor is it a substitute for, medical care, advice, or professional diagnosis. Health care professionals should use their independent judgment when reviewing NepHU's educational resources. Users seeking medical advice should consult with a health care professional.
© 2023 Otsuka Pharmaceutical Development & Commercialization, Inc., Rockville, MD
September 2023 US.CORP.X.23.00333