

# A Panel Discussion: Promoting Awareness of Rare Kidney Diseases



Improving Awareness & Patient Outcomes

**This program is paid for by  
Otsuka Pharmaceutical Development &  
Commercialization, Inc.**

**Speakers are employees and/or paid consultants of  
Otsuka Pharmaceutical Development &  
Commercialization, Inc.**

September 2022 US.CORP.D.22.00044

# NephU Webinar Rules of Engagement

- NephU is supported by Otsuka Pharmaceutical Development & Commercialization, Inc. (OPDC), Otsuka America Pharmaceutical, Inc. (OAPI),— committed supporters of the kidney health community. Editorial development and support for NephU is provided by OPDC and OPEN MINDS, who have been compensated for their services.
- NephU is a free community and online resource library for kidney disease and other related conditions. One of the methods employed for the sharing of information will be the hosting of webinars. Webinars conducted by OPDC are based on the following parameters:
- When conducting medical dialogue, whether by presentation or debate, OPDC and/or its paid consultants aim to provide the viewer with information that is accurate, not misleading, scientifically rigorous, and does not promote OPDC products.
- No continuing medical education (CME) credits are available for any NephU program.
- OPDC and/or their paid consultants do not expect to be able to answer every question or comment during a NephU webinar; however, they will do their best to address important topics and themes that arise.
- OPDC and/or their paid consultants are not able to provide clinical advice or answer questions relating to specific patient's condition.
- Otsuka employees and contractors should not participate in this program (e.g., submit questions or comments) unless they have received express approval to do so from Otsuka Legal Affairs.
- OPDC operate in a highly regulated and scrutinized industry. Therefore, we may not be able to discuss every issue or topic that you are interested in, but we will do our best to communicate openly and directly. The lack of response to certain questions or comments should not be taken as an agreement with the view posed or an admission of any kind.

# Panelists & Moderator:



**Joshua Lipschutz, MD, FASN**  
Professor of Medicine, Renal Division  
Director, and the Arthur Williams Chair in  
Nephrology, Medical University of South  
Carolina



**Shayan Shirazian, MD**  
Associate Professor of Medicine,  
Director of Home Dialysis, Columbia  
University Medical Center



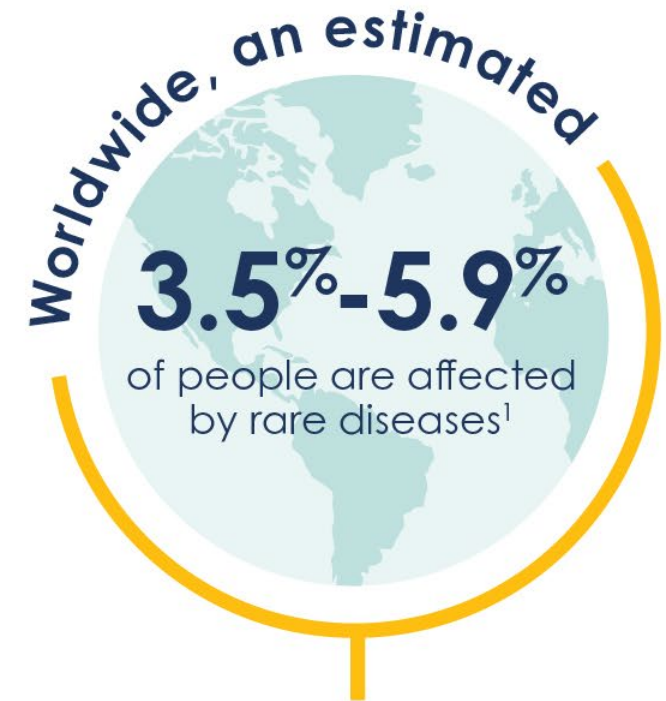
**Josh Gariboldi, PharmD, BCPS**  
Clinical & Scientific Liaison  
Field Medical Affairs,  
Otsuka Pharmaceutical Development &  
Commercialization



**Hannah Lambert, PharmD**  
Clinical & Scientific Liaison  
Field Medical Affairs,  
Otsuka Pharmaceutical Development &  
Commercialization

# Rare Diseases

- 1** 300 million people around the world live with a rare disease. 
- 2** A rare disease is defined by the United States as affecting < 200,000 at any given time. 
- 3** An estimated 25-30 million Americans are affected by rare diseases. 
- 4** Genetics are just 1 piece of the puzzle. 
- 5** Environmental factors also play a role (e.g. diet, smoking, or exposure to chemicals). 



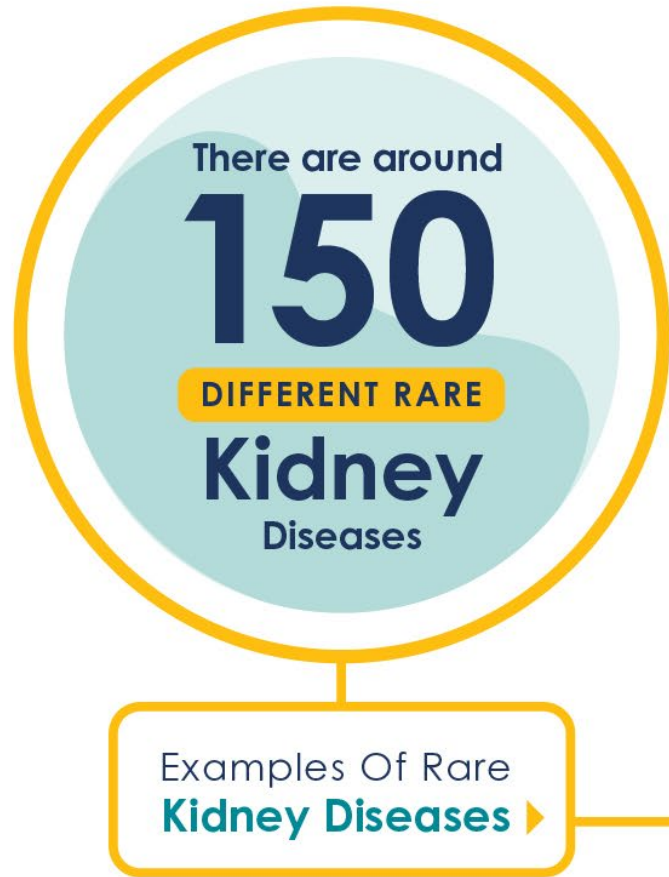
With **72%** of these diseases being genetic.<sup>1</sup>

Of which **70%** become apparent during childhood.<sup>1</sup>

1. Adapted from NephU\_Rare Disease Day\_2021 Infographic – MRC2.CORP\_X.05794



# Rare Kidney Diseases



**Autosomal Dominant Polycystic Kidney Disease (ADPKD)**

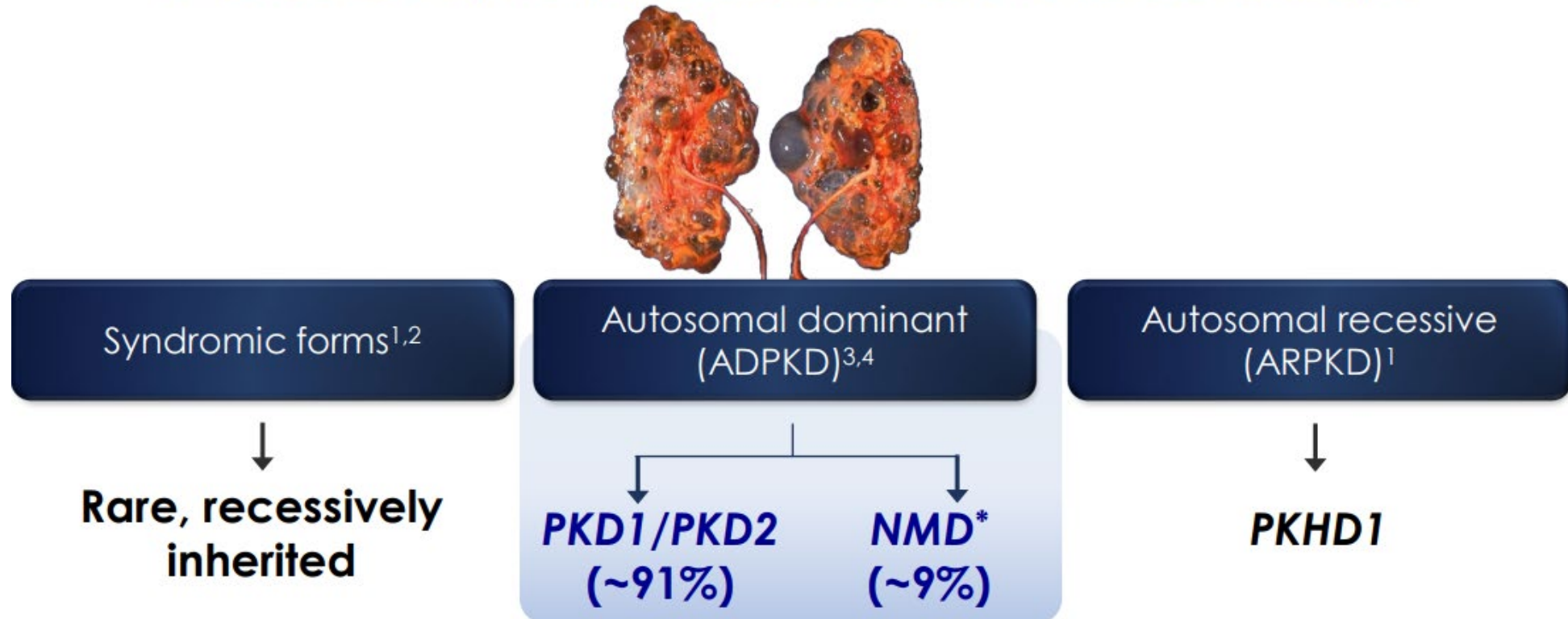


**IgA Nephropathy (IgAN)**

1. Adapted from NephU\_Rare Disease Day\_2021 Infographic – MRC2.CORP\_X.05794

# What is Polycystic Kidney Disease?

Polycystic kidney disease (PKD) is a group of monogenic disorders characterized by the propensity to develop numerous renal cysts<sup>1</sup>



1. Adapted from NephU\_Overview of Autosomal Dominant Polycystic Kidney Disease (ADPKD)\_2020 Presentation - MRC2.CDR.D.00073

# Autosomal Dominant Polycystic Kidney Disease (ADPKD)

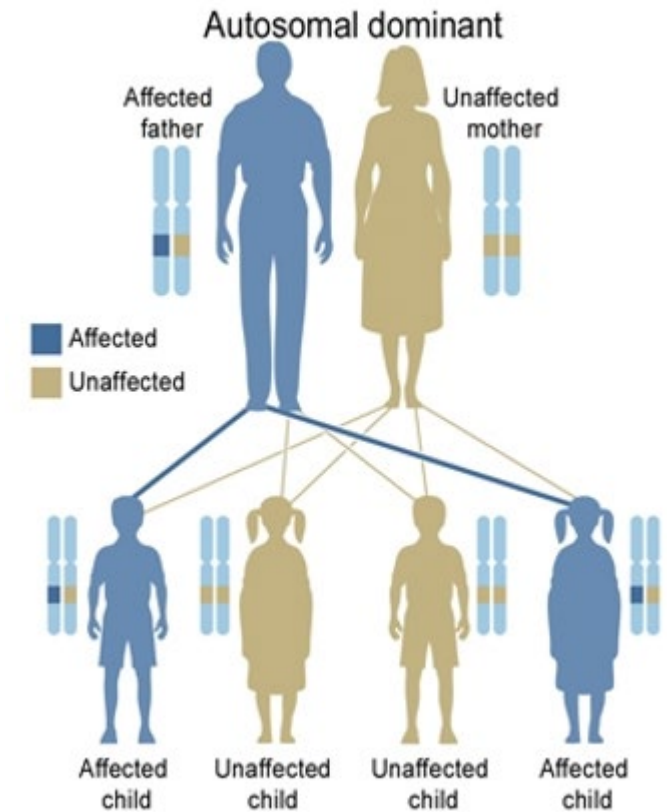
## The Most Common Life-Threatening Inherited Renal Disease

4th leading cause of end-stage renal disease

- Behind diabetes, hypertension, and glomerulonephritis

4.3 per 10,000 Americans affected

ADPKD does not discriminate on gender, race, or ethnicity



1. Adapted from NephU\_Overview of Autosomal Dominant Polycystic Kidney Disease (ADPKD)\_2020 Presentation - MRC2.CDR.D.00073
2. Adapted from NephU\_Rare Disease Day\_2021 Infographic - MRC2.CORP\_X.05794



# Immunoglobulin A Nephropathy (IgAN)

Also known as Berger's disease, it is the common glomerulonephritis worldwide

Incidence of about 2.5/100,000/year and males are twice as likely to be affected

Affects people of all ages but onset is often in teens/adults

- 20-40% of affected patients progress to kidney failure

Most likely to cause kidney failure in East Asian ancestry > Caucasians > African descent

1. Adapted from NephU\_Overview of IgA Nephropathy\_2022 Infographic – US.CORP.X.22.00054

# Emotional Burden of Autosomal Dominant Kidney Disease



1. Adapted from NephU\_Overview of Autosomal Dominant Polycystic Kidney Disease (ADPKD)\_2020 Presentation - MRC2.CDR.D.00073

# Like What You Learned Today? See What's Up Next!



[NephU.org/events](https://NephU.org/events)

The NephU Community  
Grows Stronger When  
You're Engaged.

Follow Us  
@NephUCommunity










# Thanks For Attending!

Don't Forget To **Download Your Certificate Of Completion** On NephU.org Under Your **Account** Within The **Accomplishments** Section



Manage Your Account

-  Profile
-  Email Preferences
-  Event Registrations
-  Reset Password
-  Bookmarks
-  **Accomplishments**
-  Log Out



**NephU™**

**Certificate of Completion**

*Your Name Here*

is awarded this certificate for attending

**Can Nutrition Interventions Modulate Inflammation Associated With Kidney Disease?**

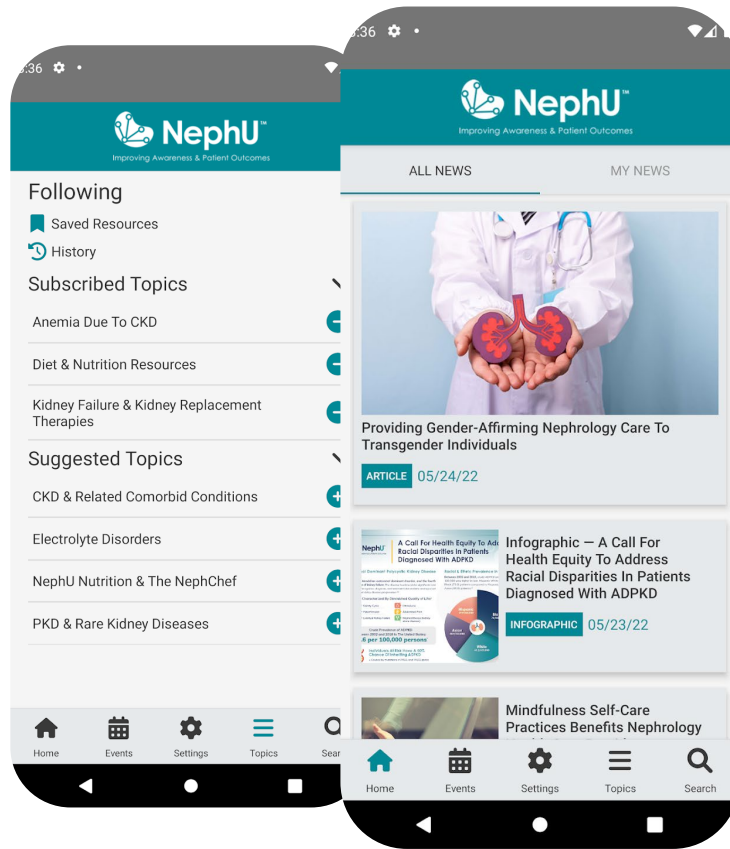
on March 9<sup>th</sup>, 2022

*Reza Maghadam, PharmD, MBA*  
Executive Director, Head of Field Medical Affairs, OPDC

1 Contact Hour

# Download The NephU Mobile App Today!

## All of Your Resources In **One** Spot



- ✓ Videos
- ✓ On-Demand Webinars
- ✓ Podcasts
- ✓ Infographics
- ✓ Kidney-Healthy Recipes

Download the [NephU App](#) from Google Play or from the Apple App Store!



# A Panel Discussion: Promoting Awareness of Rare Kidney Diseases